

# 1ROOF

St. Joe County

United Way  
of St. Joseph County



# 1 ROOF

St. Joe County

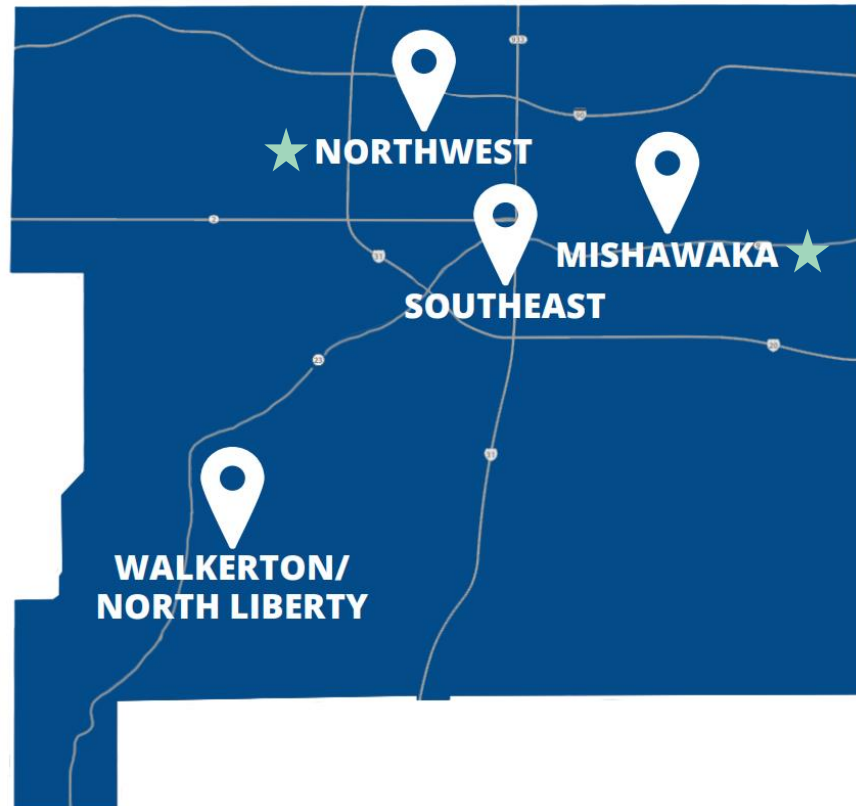
United Way  
of St. Joseph County



## Scope

Each location offering onsite essential resources for the community, under one roof

Southeast South Bend • Northwest South Bend • Mishawaka



## Built on the foundation of

1. Early learning
2. Health & wellness
3. Youth programming
4. Economic mobility
5. Coordinated social services
  - a. community navigators



# OneRoof Southeast Neighborhood Center

United Way  
of St. Joseph County  
uwsjc.org









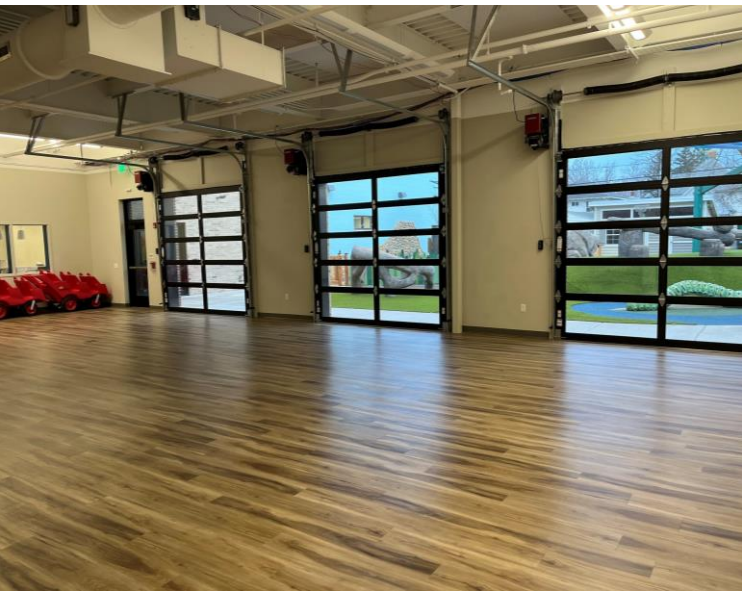




E Dubai Ave









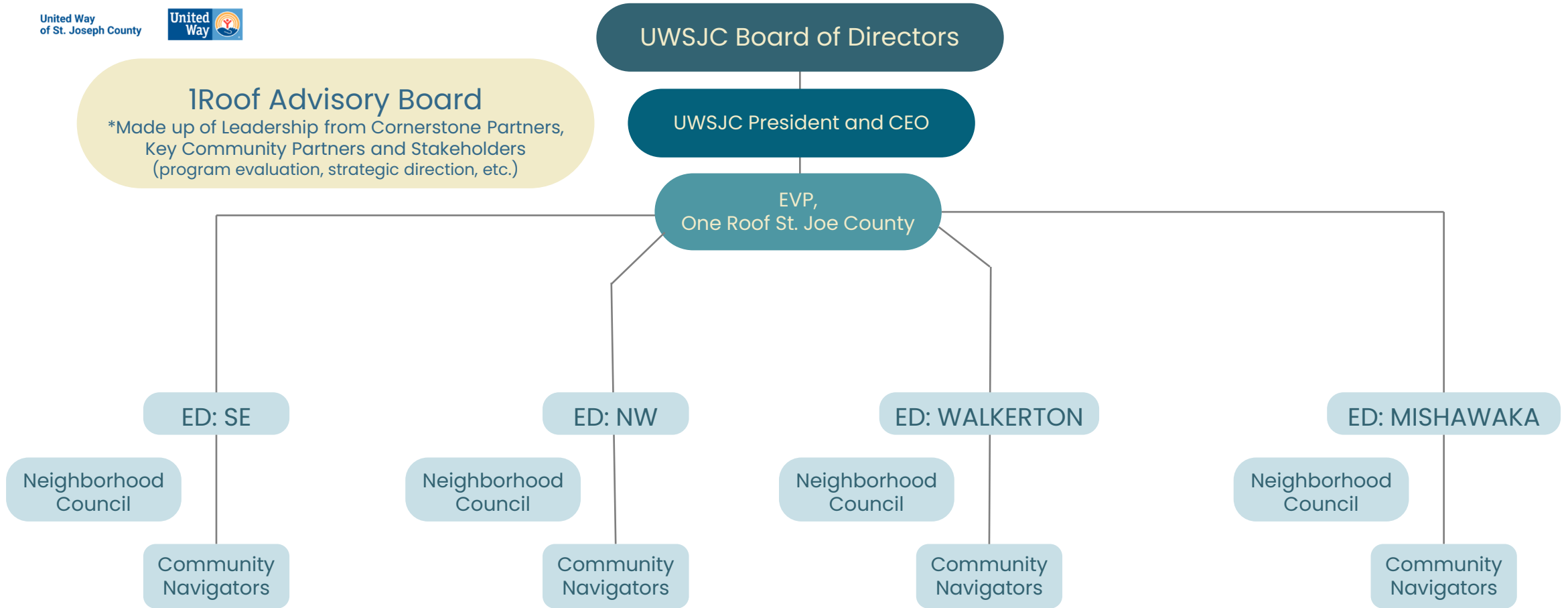


# Organizational Structure

United Way  
of St. Joseph County



**1Roof Advisory Board**  
\*Made up of Leadership from Cornerstone Partners,  
Key Community Partners and Stakeholders  
(program evaluation, strategic direction, etc.)





United Way  
of St. Joseph County



# Sustainability

Built with the end in mind

## Blended Funding Streams

eliminate dependence on a singular program/funding source.

## Shared Responsibility

each partner is responsible for the funding of their own program, utilities, maintenance and upkeep of the building.

## Partner Accountability

collaborative goal setting & measurable outcomes

